



**CAFÉ  
SOL**

[WWW.CAFESOL.CO](http://WWW.CAFESOL.CO)

## CONTACT DETAILS

+258 8222 33765 :**MAIN OFFICE**

[info@cafesol.co](mailto:info@cafesol.co) :**EMAIL**

**Timothy Hobgood (CEO)**

+258 825168527 :Tel

[tim@cafesol.co](mailto:tim@cafesol.co) :EMail

**Michael Sande (General Manager)**

+258 823163000 :Tel

[michael@cafesol.co](mailto:michael@cafesol.co) :EMail



# CAFÉ SOL



## COMPANY INTRODUCTION:

Mozambique's premier roasters started in Maputo in 2007, bringing the highest quality, specialty-grade, roasted coffee beans from the Southern Africa Region to the cups of coffee lovers. Following fair commerce practices, we promote the African Farmer while producing the world's finest, expertly roasted, coffee. Previously unnoticed around the world, coffee grown in Southern Africa, has proven to be extremely rich, well-rounded, and of the highest quality, rivaling coffees from any other origin. Our added roasting expertise bring our coffee to a peak of quality and flavor. Our delicious coffee is sold throughout Mozambique and also exported to Eswatini, with exportation to South Africa initiated this year. Our company is poised for expansion in South Africa and throughout the world. Production capacity is 20 times actual Sales.

**\*SALES SUFFERED FROM THE COVID19 PANDEMIC.**

**\*BEGINNING RECOVERY FROM THE PANDEMIC.**

Year	Annual Coffee Sales	Kilograms Roasted Coffee Sold
2019	\$476,886	5,765
2020*	\$255,658*	4,605
2021*	\$300,235*	4,708
2022**	\$329,179**	5,337
2023	\$396,825	4,434
2024 (projected)	\$394,945	3,472

## COMPANY DETAILS:

Date Business Started: 2007  
 Number of Staff: 22  
 Certification: HACCP (in process)  
 Annual Turnover (2023): \$396,825  
 Annual Capacity: 120,000 Kg  
 Available Capacity 115,200 Kg  
 Coffee origin: Southern Africa  
 Packaging: China  
 Product Variety: 4 Roasts  
 Other Potential Products: Jams, Liqueurs, Flours, Coconut Oil, Natural Soaps.

### Machinery:

1. 12 KG Infra-red Roasting Machine — Capacity over 10 MT per month
2. Commercial Burr Grinder
3. Semi-automatic packaging sealing and date stamping machine

### Commercial Customers:

1. TJ Consultants - Distributer
2. True North Commercial Supplier

## OUR KEY CUSTOMERS INCLUDE:



## PRODUCTION PROCESS



ROASTING



GRINDING

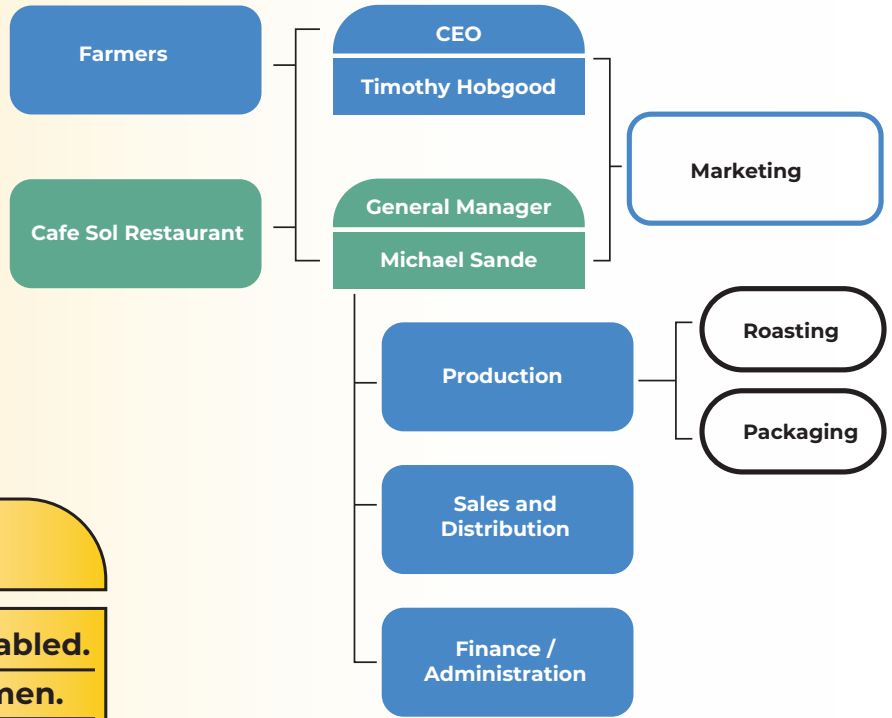


SEALING





# COMPANHIA DOCAFE DE MAPUTO ORGANIZATION STRUCTURE



## About Our Staff

**3 Disabled out of 21 staff = 1:7 is disabled.**  
**11 Women out of 21 staff = 57% Women.**  
**100% Black staffed.**

## KEY MANAGEMENT STAFF



**Timothy Hobgood**  
CEO / Owner

Over 30 years of private, public, and NGO sector organizational management, including program, financial, human resource, and marketing management..



**Michael Sande**  
General Manager

Over 15 years of private sector retail and wholesale sales and organizational management, including finance, human resources, and sales.

